

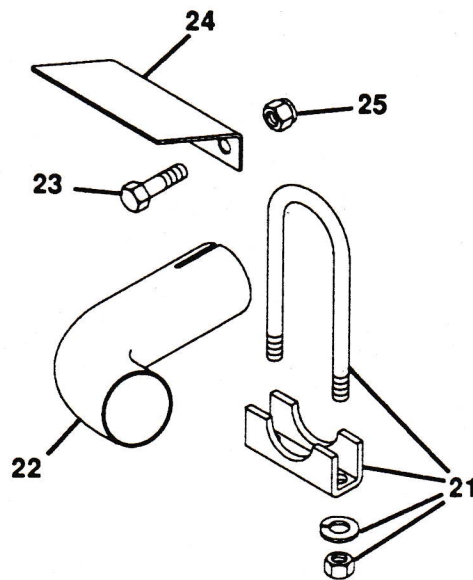
**ADDENDUM TO THE  
PRO POWER UNITS  
ILLUSTRATED PARTS LIST  
AND  
OPERATOR'S MANUAL**

FORM NO. 45547(5-88)

PART NO. 43330, 43331, 43332, 43333,  
44424, 44425, 45521

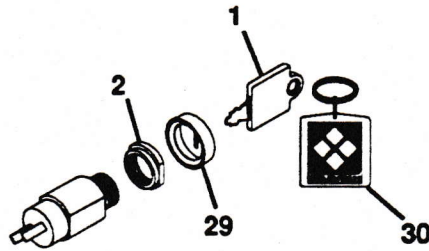
PRINTED IN USA  
\$1.00

Refer to the Pro Power Units Illustrated Parts List, Form Number 44453(9-87). On pages 9 and 10, the part number shown for item number 16 should be 41992. On page 16, item number 18, the part number shown for the Kawasaki engine should be 44350. On pages 17 and 18, item number 1, the part number shown for the control lever for the 16 HP units should be 44621. On item number 20, the part number shown for the Briggs & Stratton engine should be 45522. Also, item numbers 21 and 22 should be revised and item numbers 23, 24 and 25 should be added as shown below.



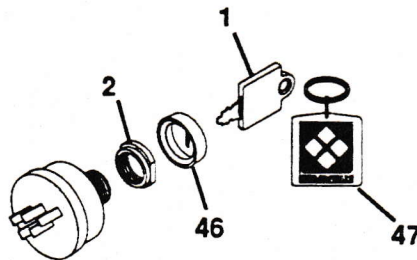
ITEM NO.	PART NO.	QTY.	DESCRIPTION
21	41552	1(18 HP)	Clamp, U 1.75
22	44550	1(18 HP)	Deflector
23	180077	2(16 HP)	Bolt, Hex 5/16-18x.75
24	44932	1(16 HP)	Deflector, Exhaust
25	413447	2(16 HP)	Nut, Lock 5/16-18

On pages 19 and 20, item numbers 1 and 2 should be revised and item numbers 29 and 30 should be added as shown below.



ITEM NO.	PART NO.	QTY.	DESCRIPTION
1	45488	2	Key, Ignition Switch
2	45497	1	Nut, 5/8-32 for Switch
29	45490	2	Boot, for 9/16 Switch Nut
30	45842	1	Chain, Key

On pages 21 and 22, item numbers 1 and 2 should be revised and item numbers 46 and 47 should be added as shown below. Also, the part number shown for item number 20 should be revised to 45071.



ITEM NO.	PART NO.	QTY.	DESCRIPTION
1	45488	2	Key, Ignition Switch
2	45489	1	Nut, 9/16-24 for Switch
46	45490	2	Boot, for 9/16 Switch Nut
47	45842	1	Chain, Key

Refer to the Pro Power Units Operator's Manual, Form Number 44454(9-87). On page 22, the Type Number shown for the 16 HP Briggs & Stratton engine should be 1220.